



Schwabe

The Industrial Partner in ProBenefit

- **The Company**
- **Research and Development**
- **Motivation to Join ProBenefit**

Karl Schötz
Side-event ProBenefit
Granada 01.02.2006

Schwabe - Company Profile

Dr. Willmar Schwabe Group

The Phytomedicine company worldwide

- Main business: plant extracts - phytopharmaceuticals
- Employees worldwide approx. 3,200
- Turnover 2004: 420 Mio. €
- International turnover share is approx. 41% obtained in over 60 countries
- R&D expenditure 23 Mio. € (2004)

Schwabe – Company Profile



Dr. Willmar Schwabe
1840-1917
Founder of
Dr. Willmar Schwabe,
Pharmaceuticals

- Established as a pharmaceutical company in 1866
- Family-owned, currently in the fourth generation

Schwabe - Company Profile

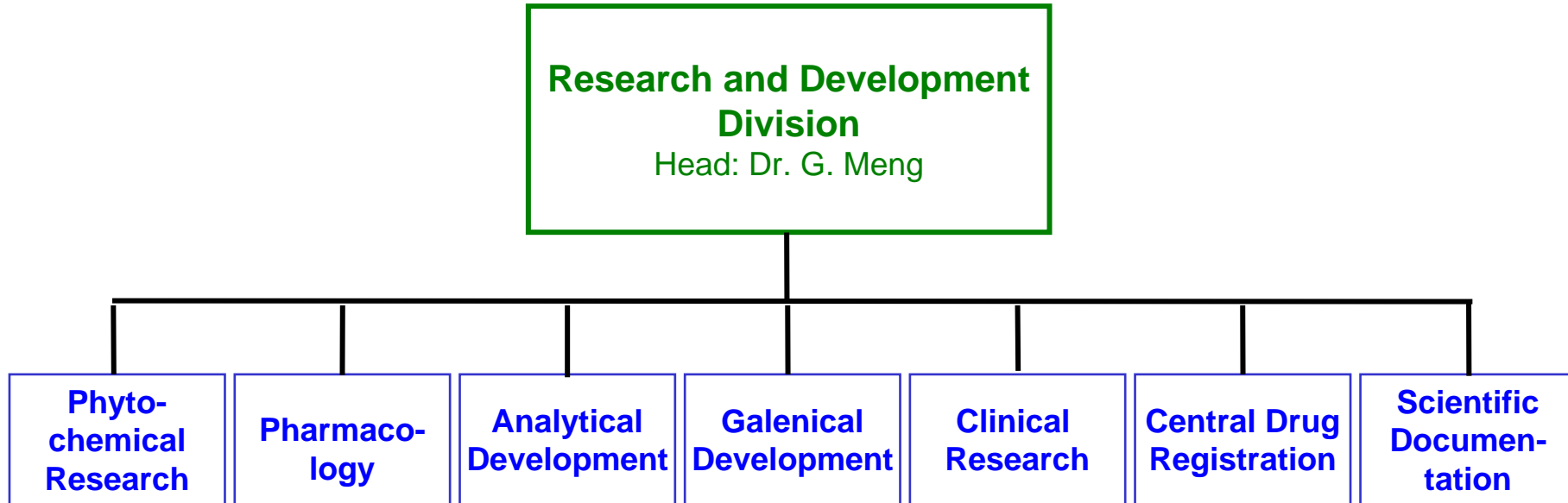
KEY PRODUCTS

Tradename (Germany)	Active Ingredient	Approved Indications (Germany)
Tebonin[®]	Ginkgo extract	Dementia, PAOD, tinnitus, vertigo
Neuroplant[®]	St. John's Wort extract	Depressive disorders
Crataegutt[®]	Hawthorn extract	Mild forms of heart failure

Herbal Medicinal Products (HMP)

- HMP are preparations that contain plants or plant parts in crude or processed state and claim **therapeutic or prophylactic** properties
- They are available as modern drug preparations like drops, tablets, dragees or capsules
- To get a registration for one marketable product, it takes about ten years time and at least 15 Mio. Euros of investment

Schwabe - Research and Development



Number of employees in R&D Division: 127
Academics: 37
Technicians: 52
Others: 38

Reasons to join ProBenefit

- Phytochemical Research and Pharmacology on new plants
- Proof and Validation of ethnomedicinal effects
- New candidates for the development pipeline
- Promotion of traditional medicinal products
- Opportunity to participate in the development of fair access procedures
- Legal use of traditional knowledge